



*Sonfin (Pty) Ltd*

38 Struben Street, Shere AH, Pretoria  
P O Box 8250, Centurion, 0046, South Africa

Tel +27 72 102 6979

info@sonfin.co.za ♦ [www.sonfin.co.za](http://www.sonfin.co.za)

Chris Schutte  
29 June 2021



*farmer's weekly*



## 2 Different Eskom network connection

- Low Voltage (LV) Connections
- Medium Voltage (MV) Connections



- Low Voltage

- Solar plant smaller than 350 kWp
- Connecting at 400/230V
- New Agreement with Eskom
- NERSA registration required if system is bigger than 100 kWp
- New Offsetting/Banking Agreement
  - Must change to Ruraflex
  - 1 Solar plant for multiple Eskom POCs (Point of Connection)
    - on the same Eskom line
    - on the same Eskom account





## 2 Different Eskom network connection

- Low Voltage (LV) Connections
- Medium Voltage (MV) Connections



- Medium Voltage
  - Any size solar plant smaller than 1MWp
  - Connecting at 11 or 22kV
  - New Agreement with Eskom
  - NERSA registration required
  - New Offsetting/Banking Agreement
    - Must change to Ruraflex
    - 1 Solar plant for multiple Eskom POCs
      - on the same network
      - on the same Eskom account



# Eskom Approval Process



- 1. Apply at Eskom for LV or MV connection**
- 2. Receive Cost Estimate Letter (CEL)**
  - Except CEL and Request BQ
- 3. Receive Budget Quote (BQ)**
  - Except BQ and pay BQ in full.
- 4. Ensure Eskom send a letter to NERSA**
  - to inform NERSA that you did get Eskom approval, and
  - Eskom agrees that NERSA can proceed with the registration
- 5. After receiving Registration certificate**
  - Start to Build Eskom Point
  - Sign Distribution and Connection Agreements with Eskom
  - Complete build of Eskom Point and Solar Plant
  - Commission Eskom Point and Solar Plant
  - Sign Amendment agreement for offsetting/banking of Energy
  - Receive Eskom Accounts reflecting Offsetting



# Rules for Exporting (Offsetting/Banking) of Energy

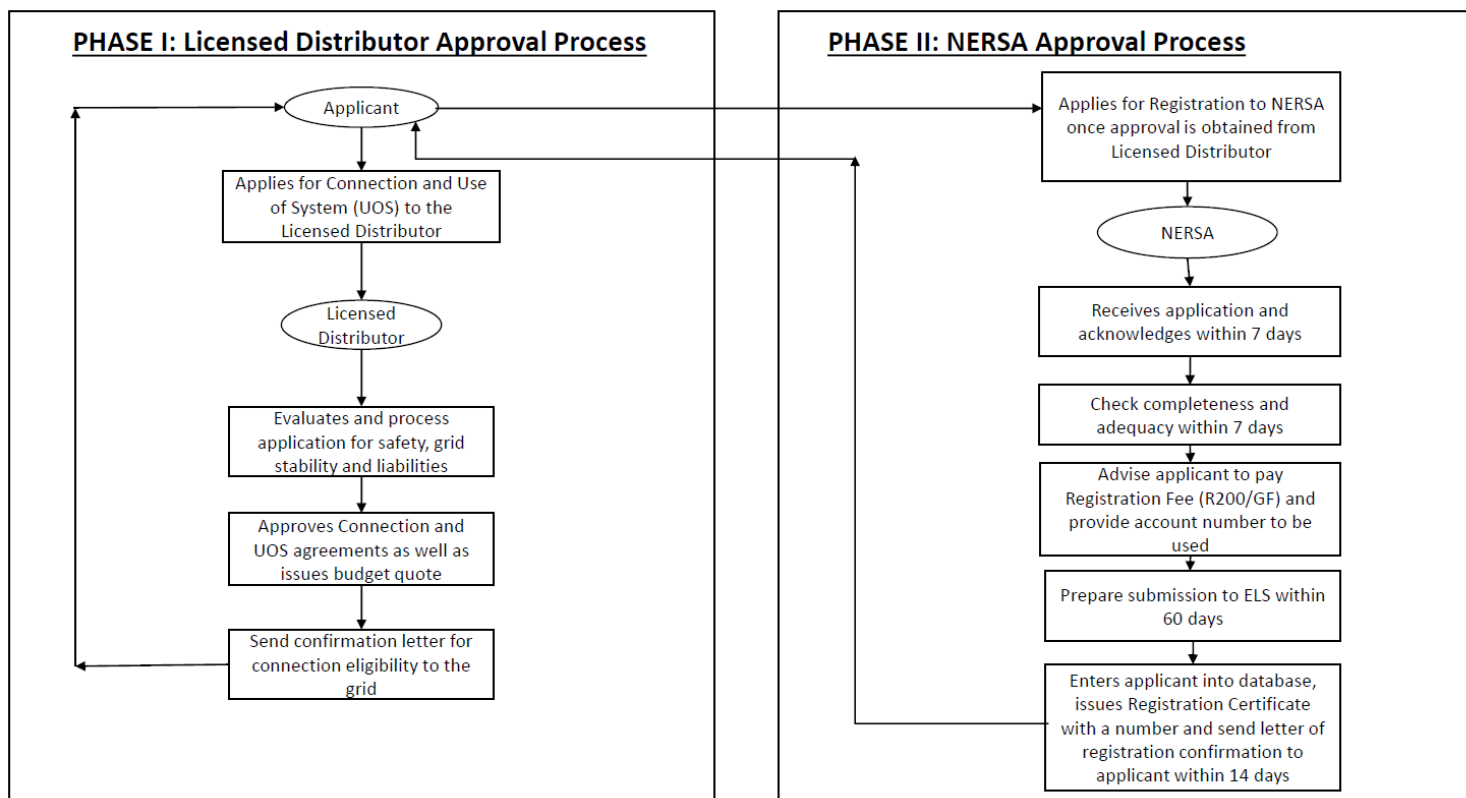


- 1. All accounts must be on the same name.**
- 2. All accounts must be on the same Eskom line.**
- 3. All accounts must be on Ruraflex tariff structure.**
- 4. All the above apply to both LV and MV Offsetting/Banking.**



# NERSA Process

## PHASE I & II OF REGISTRATION PROCESS



# NERSA vs 100 MW



## OPINION | SA's new licensing threshold is a win. Next step, cut red tape

🕒 13 Jun

Keith Webb

**fin24**

NETWERK24

ENERGIE

## 100 MW: Wag 'n bietjie, maan Nersa

Deur: Francois Williams  
11 Junie 2021, 03:50

Nie so haastig nie, het die Nasionale Energiereguleerder (Nersa) Vrydag in 'n verklaring gewaarsku oor die lofsange oor lisensielose kragopwekking van tot 100 MW vir private kragopwekkers.



**farmer's weekly**



## Reference Sites



**farmer's weekly**



# Reference Sites

## Eskom connection point

### Medium Volt



**farmer's weekly**

I Believe in  
ESKOM



**finweek**

**FINWEEK**

# Kragkrisis: Is die einde in sig?

Deur: Mariam Isa  
11 UUR.

**25 Junie 2021**



**farmer's weekly**